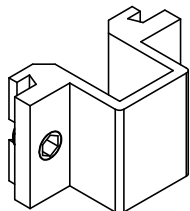
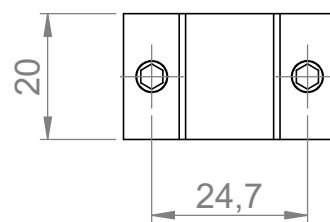
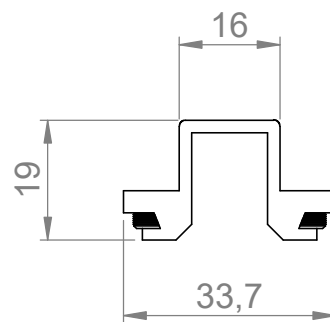
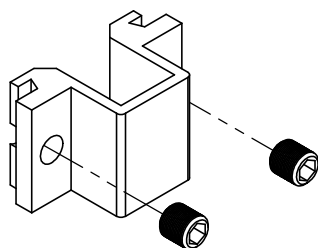


ACABAMENTOS: 10 - BRANCO/ 20 - PRETO / 30 - FOSCO



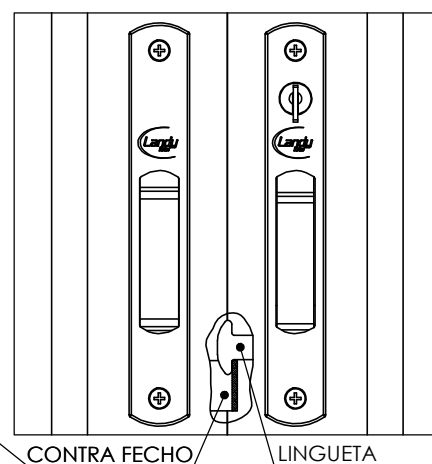
PERSPECTIVA



DIMENSÕES
(SEM ESCALA)



MONTAGEM
(SEM ESCALA)



FIXAR 1 PEÇA NA FOLHA MÓVEL DO FECHO CEGO POSICIONANDO A ALTURA DE ACORDO COM A ALTURA DA LINGUETA DO FECHO COM CHAVE NA POSIÇÃO FECHADO

CARACTERÍSTICAS

COMPONENTES	MATÉRIA-PRIMA	CÓDIGO	ACABAMENTO	UTILIZADO EM JANELAS
CONTRA FECHO	ALUMÍNIO	41.00.0049	CONF. PEDIDO	
PARAFUSOS	INOX			